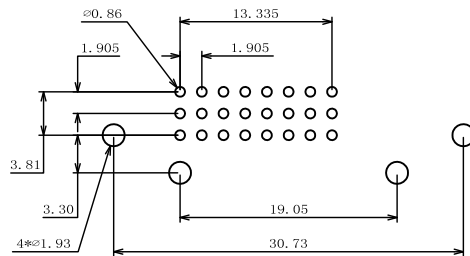
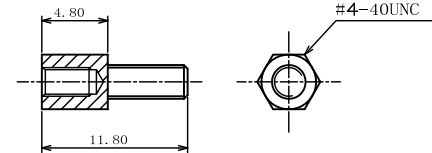
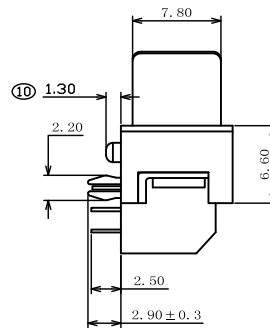
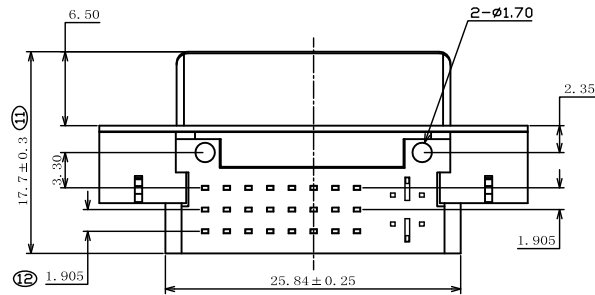
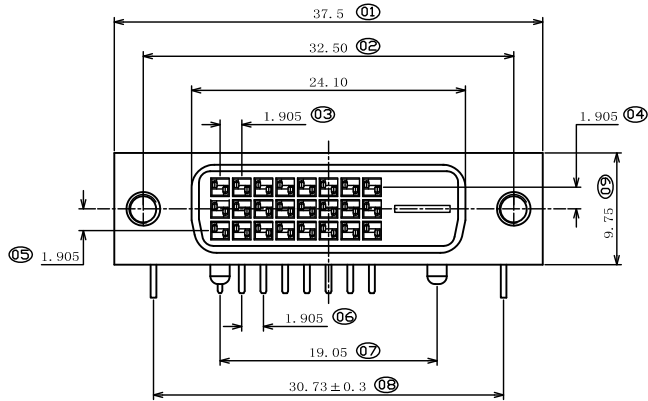


RoHS COMPLIANT



RECOMMENDED P.C.B. HOLE LAYOUT
COMPONENT SIDE VIEW (TOLERANCE: +/-0.05)

TECHNICAL REQUIREMENTS:

1. ELECTRICAL:

CURRENT RATING: 3AMPS.
VOLTAGE RATING: 500VAC.
CONTACT RESISTANCE: 30mΩ MAX.
INSULATION RESISTANCE: 1000mΩ

2. ENVIRONMENTAL:

OPERATING TEMPERATURE: -25°C to +85°C
STORAGE TEMPERATURE: 20°C TO 25°C

SCREW	2	Steel, Ni PLATING OVER ALL.	⑦
FISH FORK	2	SPCC, Tin PLATING OVER ALL.	⑥
SHELL	1	SPCC, Ni PLATING OVER ALL.	⑤
RIVET	2	COPPER ALLOY, Ni PLATING OVER ALL.	④
COVER	1	PA66+30%G. F	③
CONTACT	24	BRASS, SEMI-GOLD TIN	②
INSULATOR	1	PBT+30%G. F	①
PART NAME	QTY.	MATERIAL	ITEM

版本	變更內容	日期
千川	MODIFIXATION	DATE
00	新整理	2016. 05. 30



東莞市千川电子有限公司
DONG GUAN QIAN CHUAN ELECTRONIC CO., LTD

公差	數量	制圖	潘红国	品名	DVI24+1 母座 卧式DIP 黑/白胶 短柱 柳合 锁螺丝			
TOLERANCE	QUANTITY	DRAW IN	審核	TOMS	料號	QDV1CN2-01PW2P		
.X ± 0.35	單位	mm	核准	LGL	材質	圖号	A037	
.XX ± 0.25	比例	1:1	角法	頁數	1 OF 1	顏色		
.XXX ± 0.20	圖幅	A4	PROJ.					
X° ± 2°								
.X° ± --								