

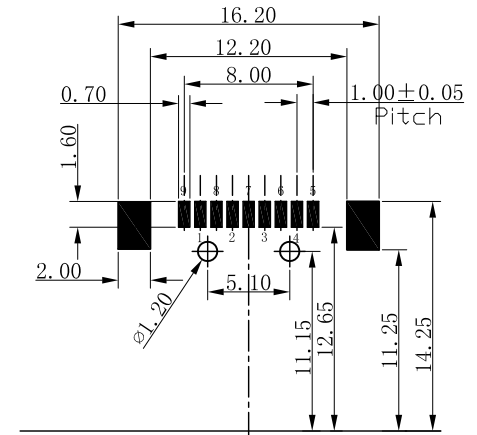
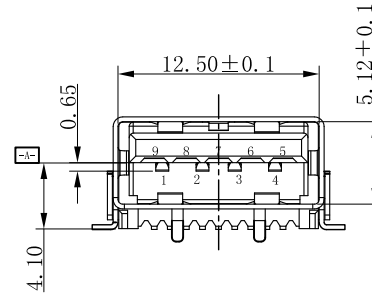
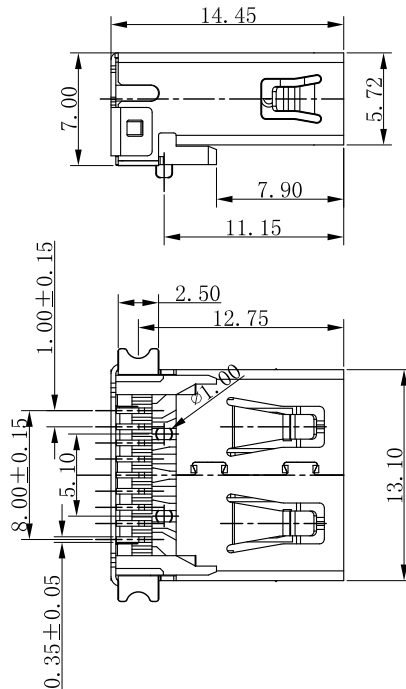
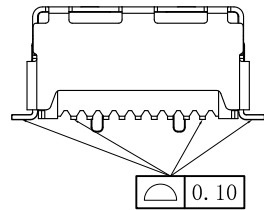
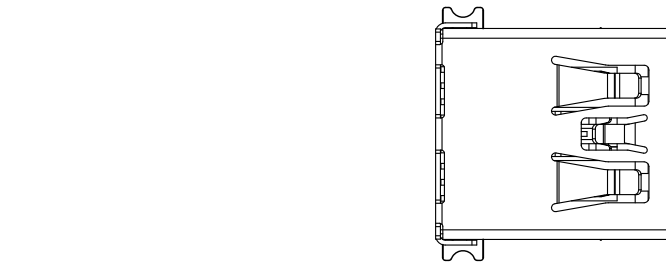
TECHNICAL REQUIREMENTS:

1. ELECTRICAL CHARACTERISTICS:

- 1.1 CONTACT RESISTANCE: 30mΩ MAXIMUM
- 1.2 CONTACT CURRENT RATING: 1.5A
- 1.3 DIELECTRIC WITHSTANDING VOLTAGE: 500 V R. M. S.
- 1.4 INSULATION RESISTANCE 1000 MEGOHMS MIN
- 1.5 OPERATING TEMPERATURE: -40° C ~ 85° C

2. MECHANICAL CHARACTERISTICS:

- 2.1 MATING FORCE: 35N MAX
- 2.2 UNMATED FORCE: 10N MIN  
8N Min After Durability
- 2.3 DURABILITY: MANDATORY: 5000 CYCLES

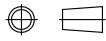


PCB EDGE  
RECOMMENDED PCB LAYOUT

1	HOUSING	HIGH TEMPERATURE PLASTIC UL94V-0	③
9	CONTACT	COPPER ALLOY, GOLD FLASH PLATED ON CONTACT AREA TIN PLATING ON SOLDER AREA, NI PLATING UNDER OVER ALL	②
1	SHELL	SPCC/BRASS, Ni PLATING OVER ALL.	①
QTY'S	PART	SPECIFICATION	ITEM

版本 千川	變更內容 MODIFICATION	日期 DATE

 東莞市千川电子有限公司  
DONG GUAN QIAN CHUAN ELECTRONIC CO., LTD

公差 TOLERANCE	數量 QUANTITY	制圖 DRAWING	潘富国	品名 TITLE	USB3.0 9Pin 母座 卧式SMT式 外壳脚贴板 短体L=14.45mm
.X ± 0.35	單位 UNIT	審核 CHECKED	TOMS	料號 PART NO.	QU3F9E1-01BN1R31
.XX ± 0.25	比例 SCALE	核准 APPROVE	L G L	材質 MATERIAL	
.XXX ± 0.15	圖幅 SIZE	角法 PROJ.		頁數 SHEET	1 OF 1
X° ± 3°				顏色 COLOR	
X° ± 1.5°					